

**STI-C STI-P ST2-C** models  
have numerous accessories  
to make 'em even more  
functional.



### **KIT PC-I**

The PC-I kit includes and useful multifunctional side with drawers, designed to be installed on our wheeled vacuum cleaners, models STI and ST2, is a fast solution created to make them even more versatile.



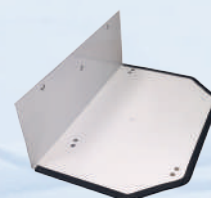
### **KIT PC-I BS**

Useful functional side, to be equipped with accessory drawer.



### **ST-MPO**

Accessory shelf.



### **ST-PT**

Paper towels holder.



### **AWW**

Waste basket.

